

**Downloading Labels, Fonts, and Graphics
On the Century Falcon 4 Plus Printer
Using C Label IV**

James E. Will

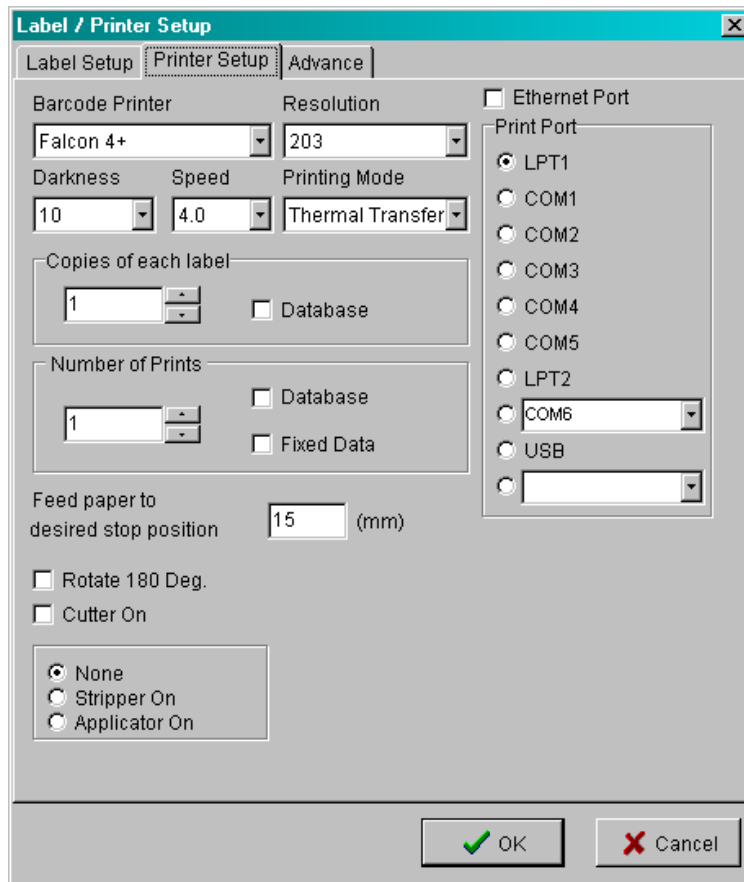
Copyright © 2008 Century Systems, Inc.

Downloading Labels, Fonts, and Graphics On the Century Falcon 4 Plus Printer Using C Label IV

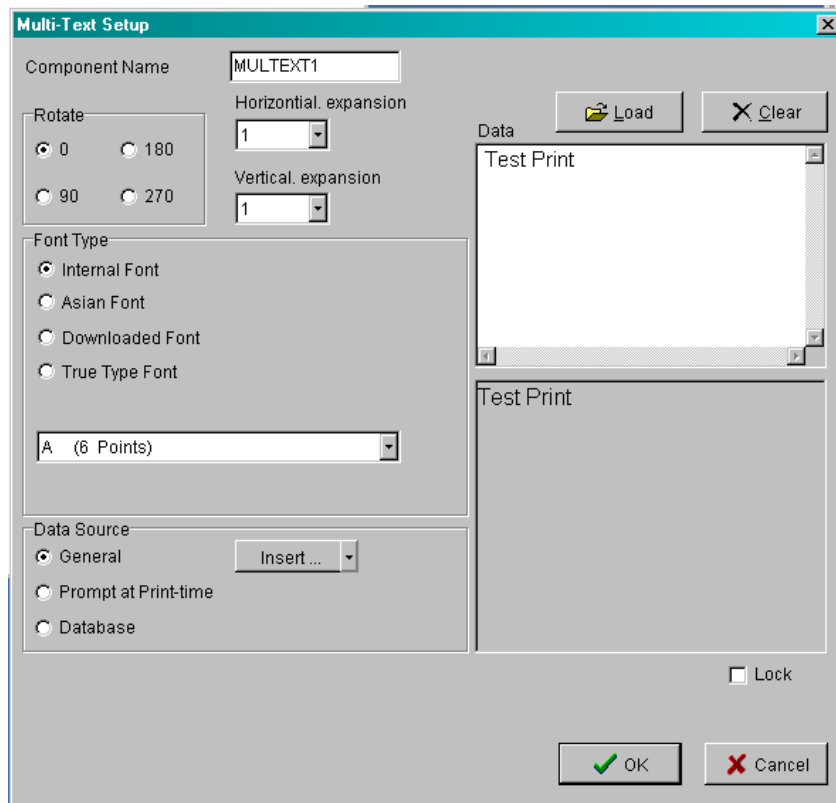
The basic procedure for downloading a label to the Falcon 4 Plus is fairly simple. However, if the label design contains any graphics or True Type fonts, those must be downloaded to the printer separately.

Downloading a True Type font is usually most easily done during the process of creating a new label, if this is the first time that the desired font is being used. It is generally most convenient to download a complete font set (such as Arial), rather than a singular font size (such as Arial 10 point). Make sure that your printer is turned on and that either your parallel cable or USB cable is attached. The steps for doing the download follow:

- a. Go to the File menu and click on 'Printer Setup'. Select the appropriate print port, then click OK.

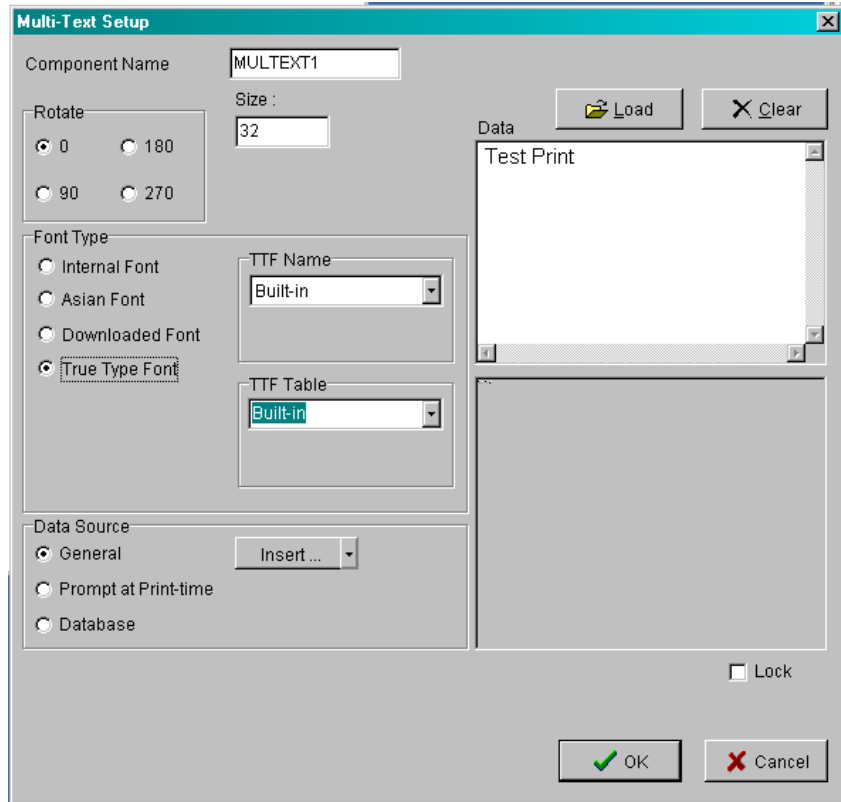


- b. Go to the Draw menu and click on 'Text'. [Or you can simply click on the Text icon.] Left click on a blank area of the label design. This will open the Multi-Text Setup window.
- c. Input a data string in the box that says 'Data'.



Continue on next page ►

d. Under 'Font Type', select 'True Type Font'.

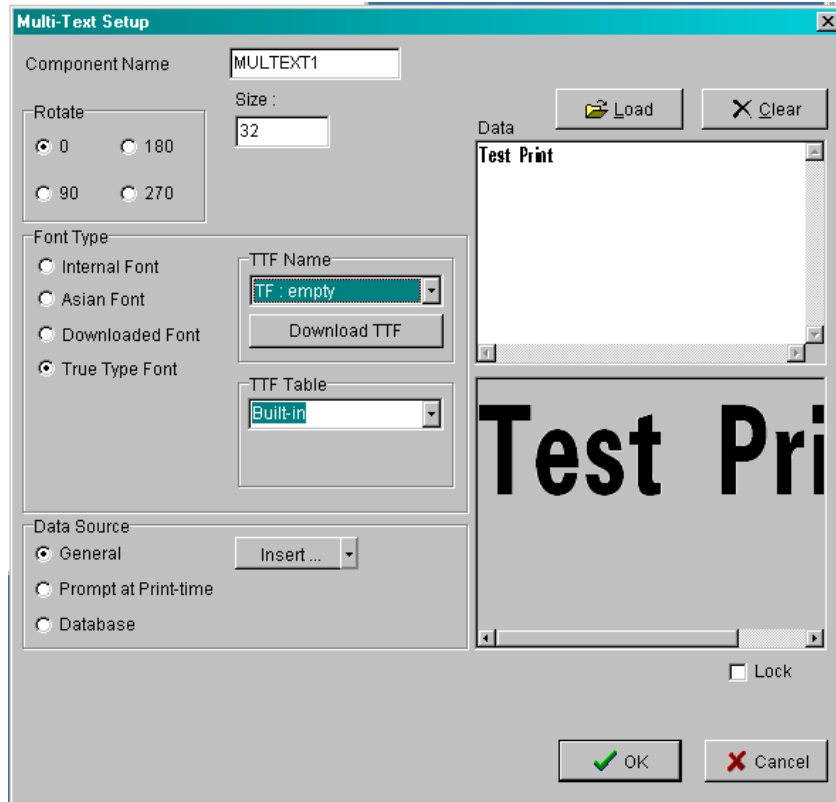


Notice that the Font Type area now has two additional option boxes, one labeled 'TTF Name' and the other 'TTF Table'.

The font size information is applicable only to the current text field. When you enter additional text of the same font type (after the font set download is completed), you can select whatever font size you desire from those available in the set.

Continue on next page ►

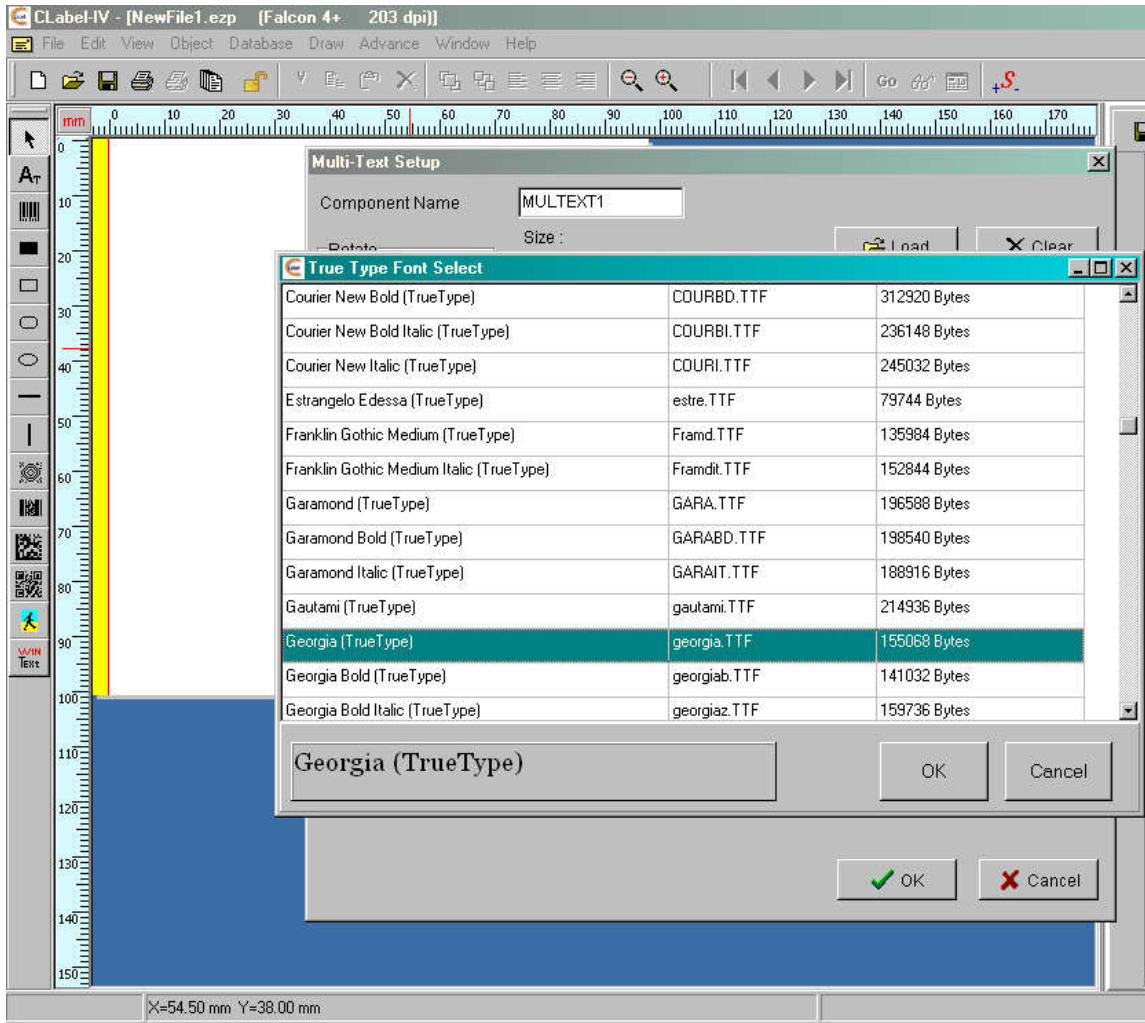
- e. Under 'TTF Name', select the Font ID that you want to use for the font.



Once the storage area is selected, the 'Download TTF' button will appear, as illustrated above.

Continue on next page ►

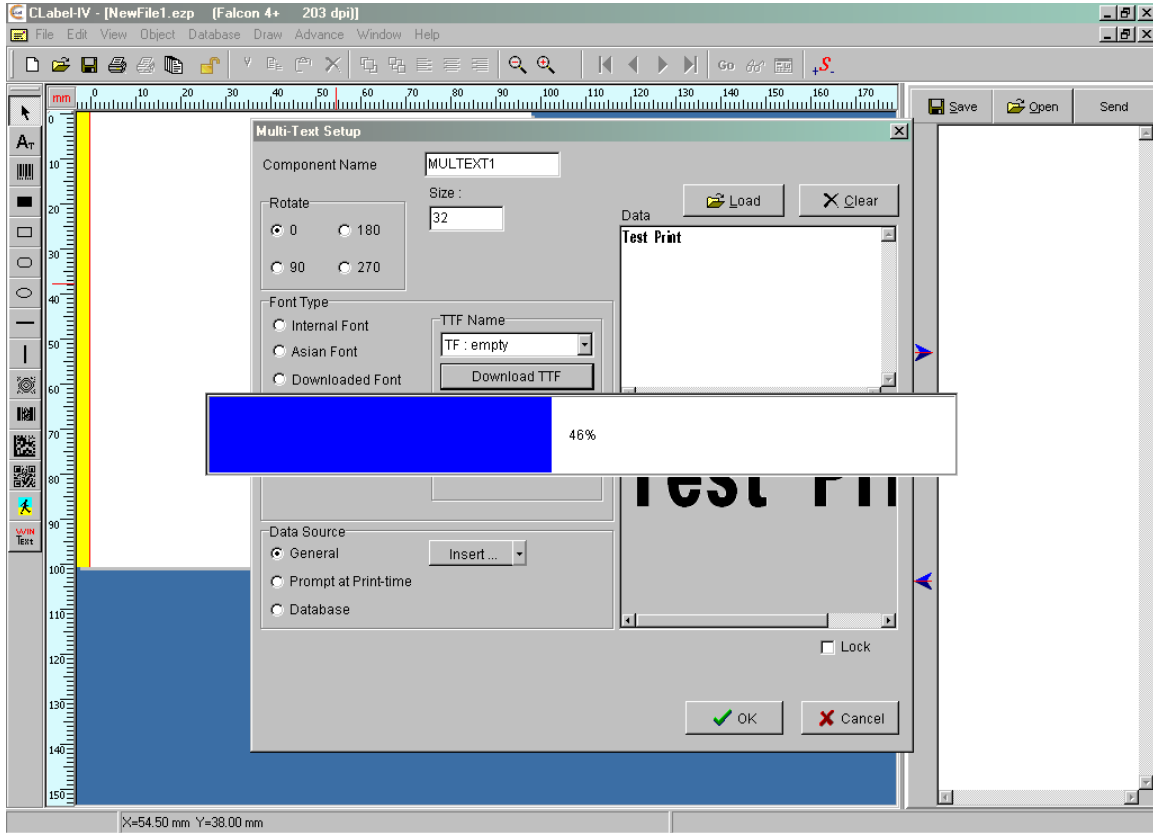
- f. Click the 'Download True Type Font' button, and select the Font that you desire. Click OK.



In this example, Georgia font has been selected.

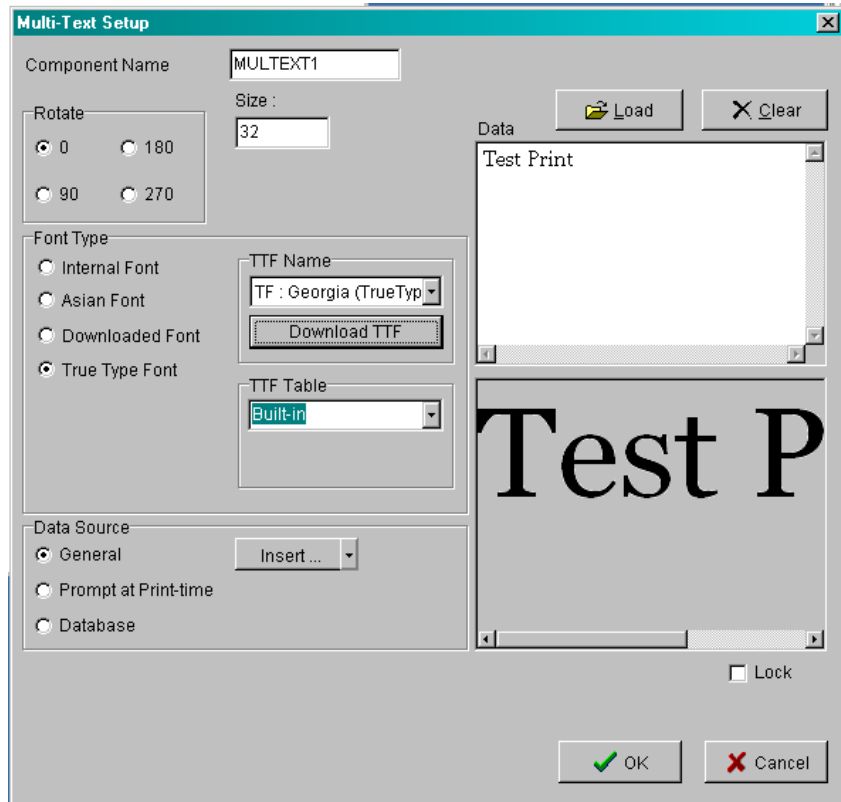
Continue on next page ►

- g. The new font will be downloaded to the printer. You will see a progress bar appear on the computer. When it finishes, you should hear a single beep from the printer, indicating that the download has been received.



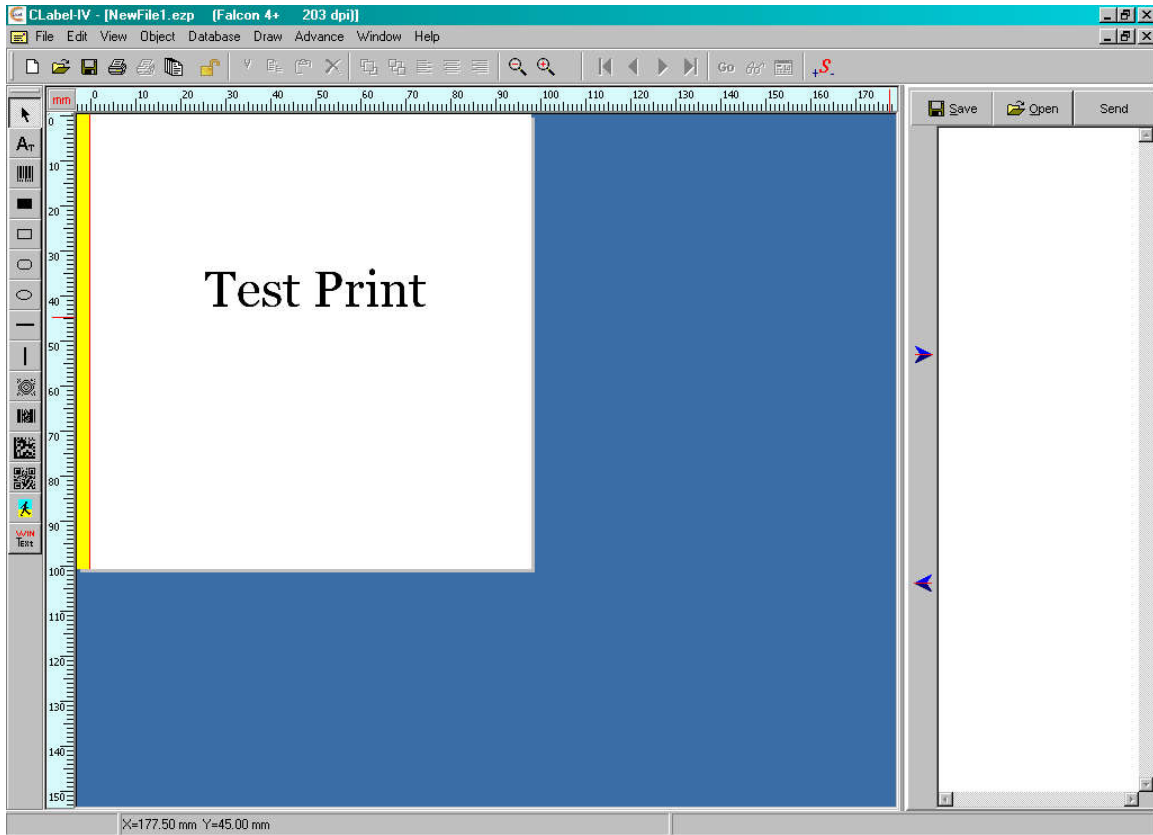
Continue on next page ►

h. The name of your new font will appear in the Multi-Text Setup box.



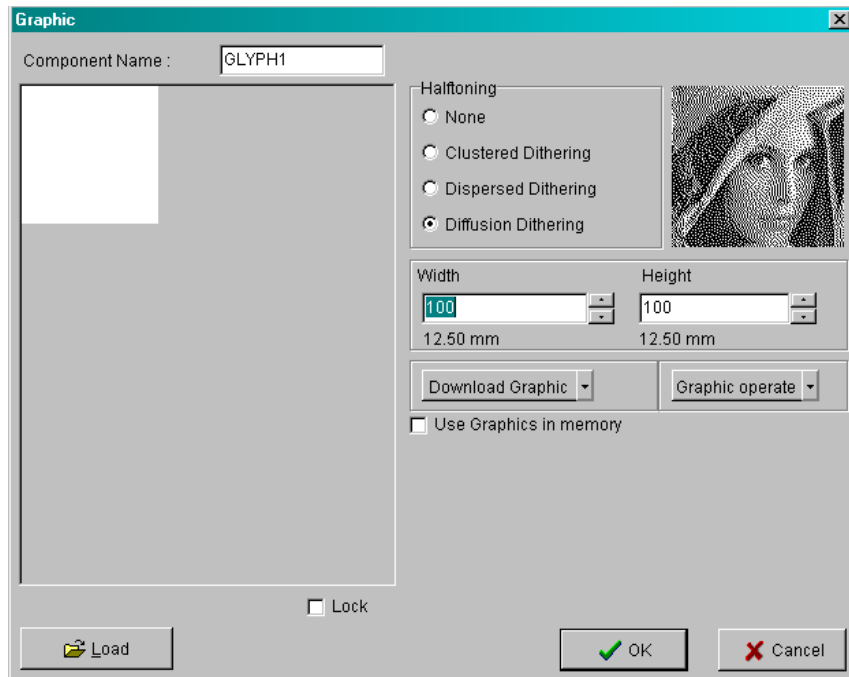
Continue on next page ►

- i. Click OK. The data string will appear on the new label and will be ready to print.



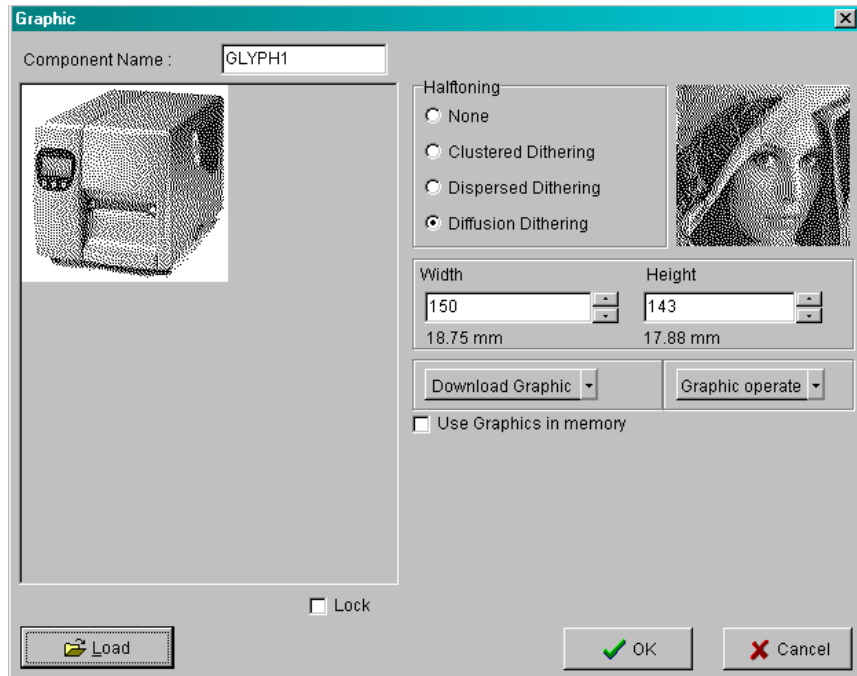
Downloading a graphic to the printer can also be done at the time a label is being created. It is accomplished in the following way:

- a. On the Draw menu, click on 'Graphic'. [Or use the Picture icon on the Q Label toolbar.] Left click on a blank area of the label design. This will open the Graphic dialog box.
- b. Click on the 'Load' button.

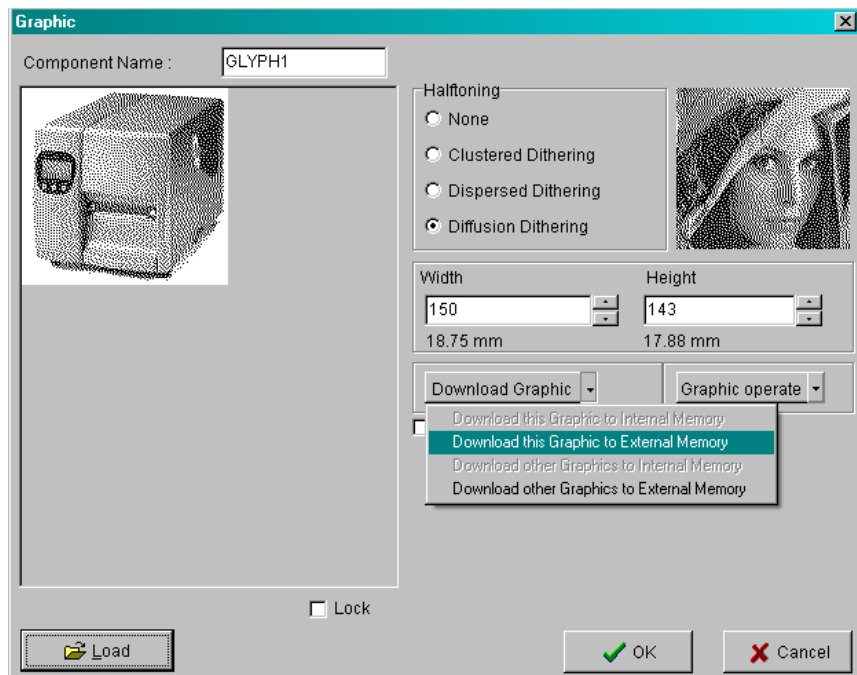


- c. Open the graphics file that you wish to add to the label. The chosen graphic will then appear in the Graphic dialog box.

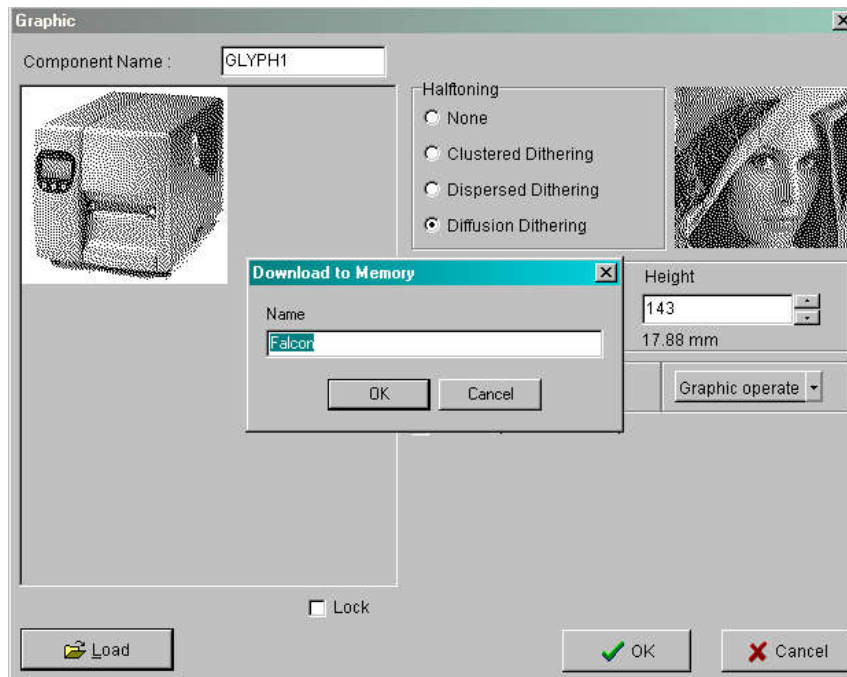
See illustration on the following page.



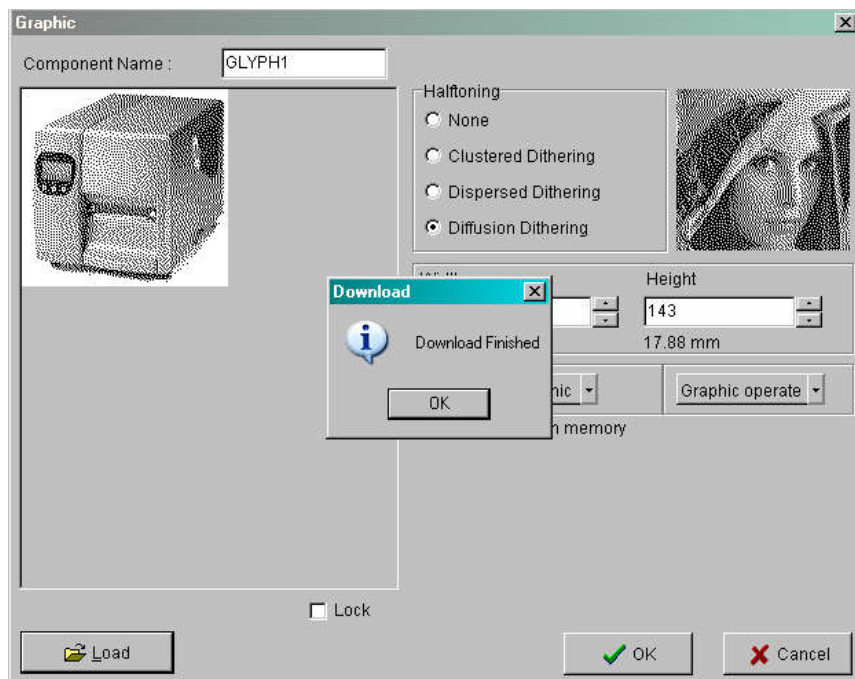
- d. Click on the dropdown arrow next to the 'Download Graphic' button and click 'Download this Graphic to External Memory'.



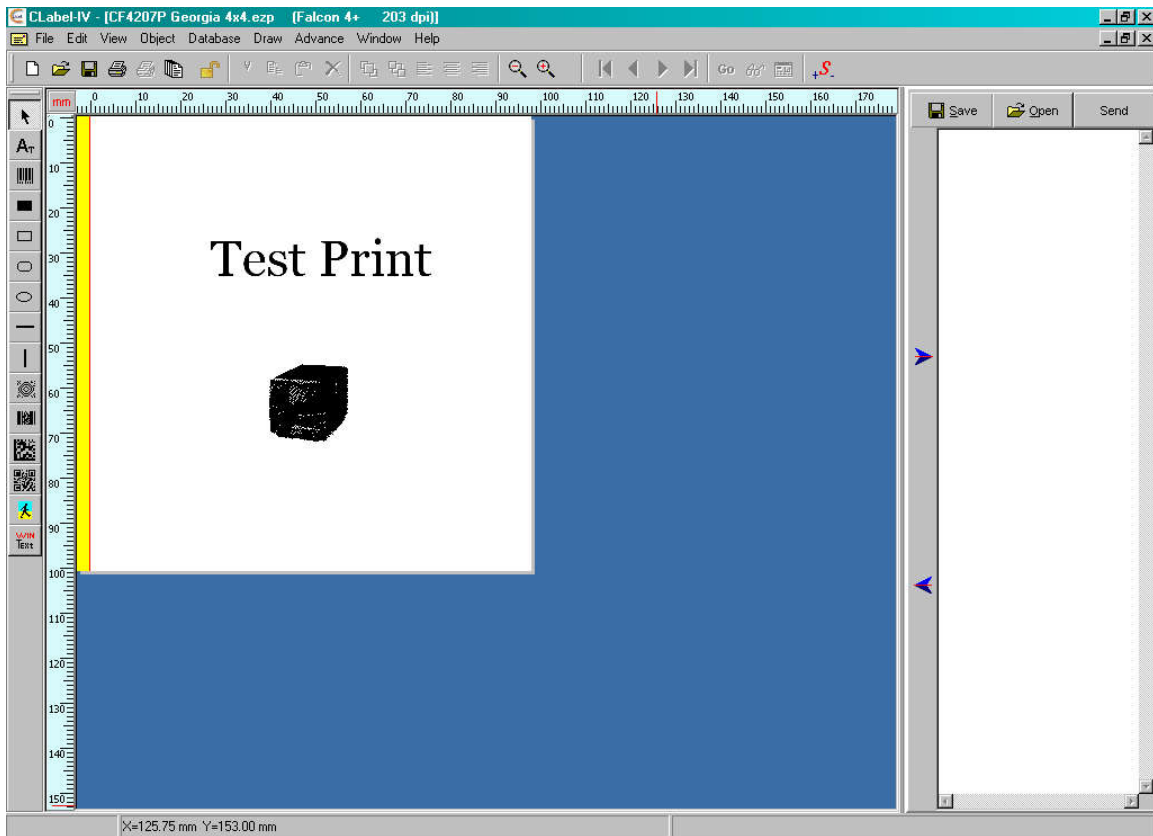
- e. The software will ask you to provide a name for the graphic file. You can use either the default name (which should reflect whatever name you gave the graphic on your computer) or you can select a new name.



- f. After selecting a name, the download process begins.

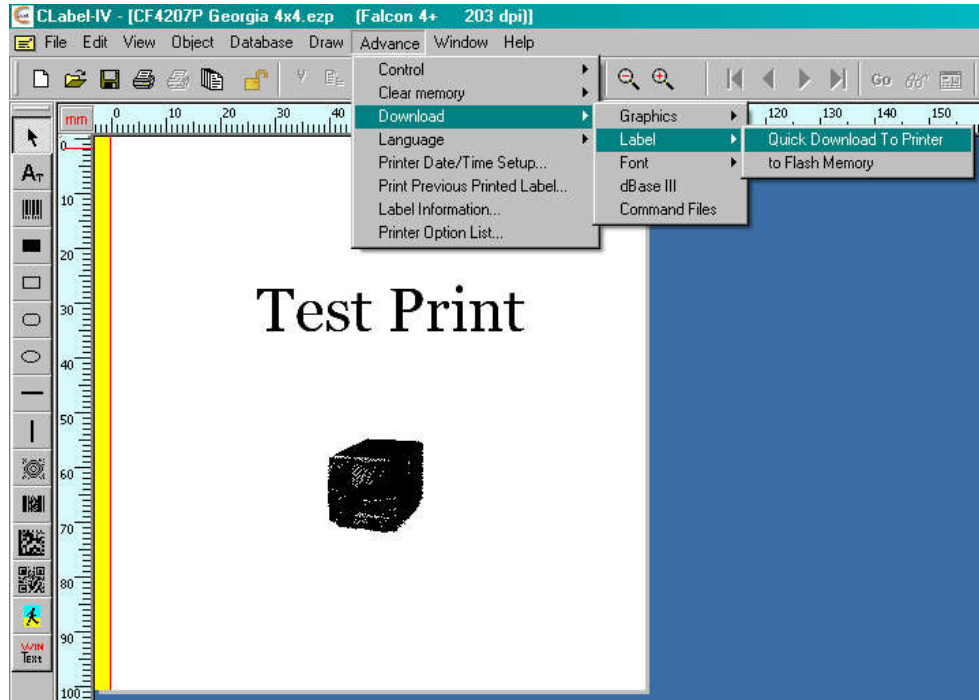


- g. When the download is completed, click OK on the download box. The printer will beep once to confirm the download. Then click OK to close the graphics box. The graphic will appear on the new label and will be ready to print.



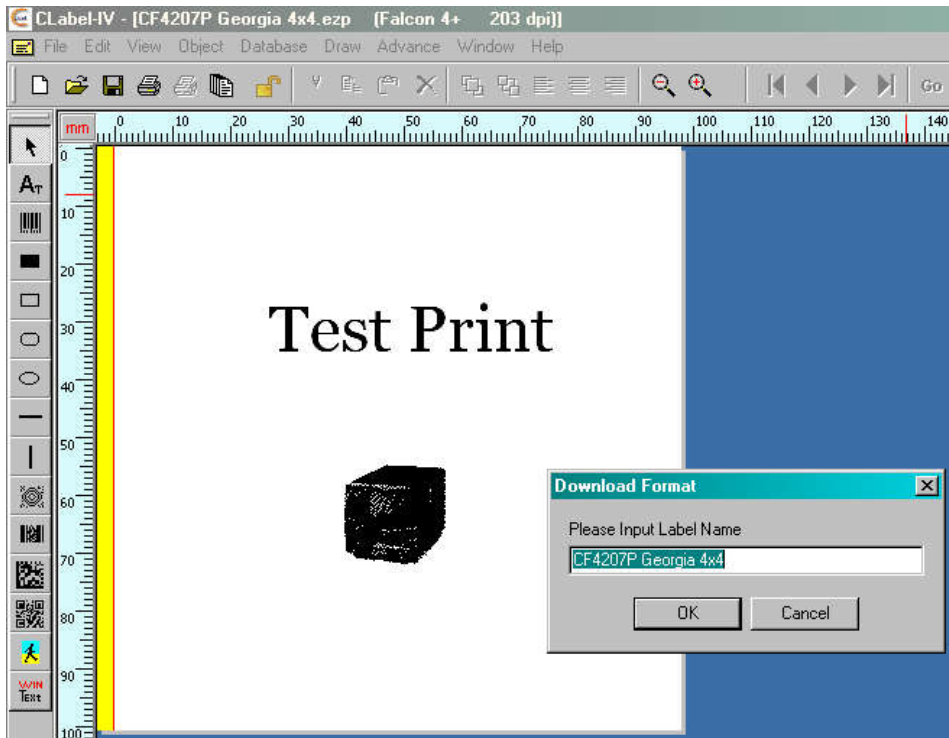
Once any True Type fonts and graphics have been downloaded to the printer, the label design itself can then be downloaded as well. The procedure is as follows:

- a. Go to the Advance menu. Highlight 'Download' in the submenu.
- b. In the next submenu, highlight 'Label' and then select 'Quick Download to Printer'.



- c. The software will ask you for a file name. You can use the default name (which will be the same as the file name in C Label) or you can choose a new name.

[See illustration on next page]



d. Click OK. The label will be downloaded to the printer. The printer will beep to acknowledge that the data has been received, and the computer will display a small window to indicate that the download is complete. Close the Download Complete window.