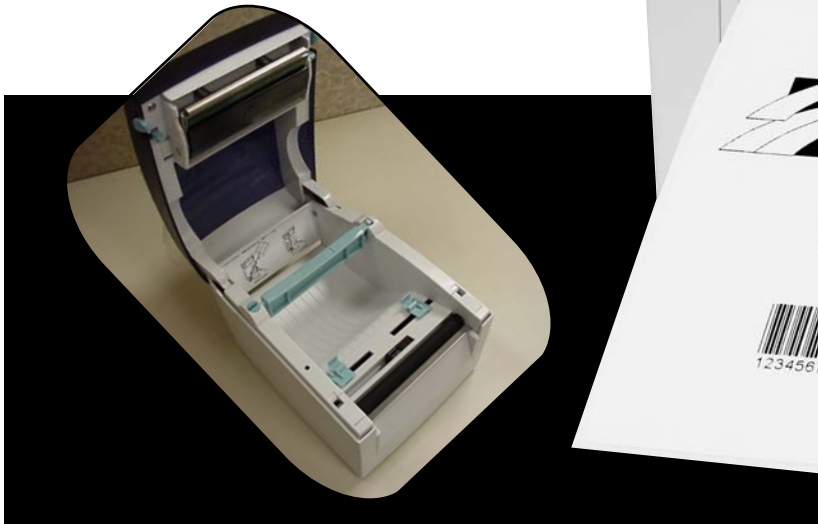


# The Falcon 4DT

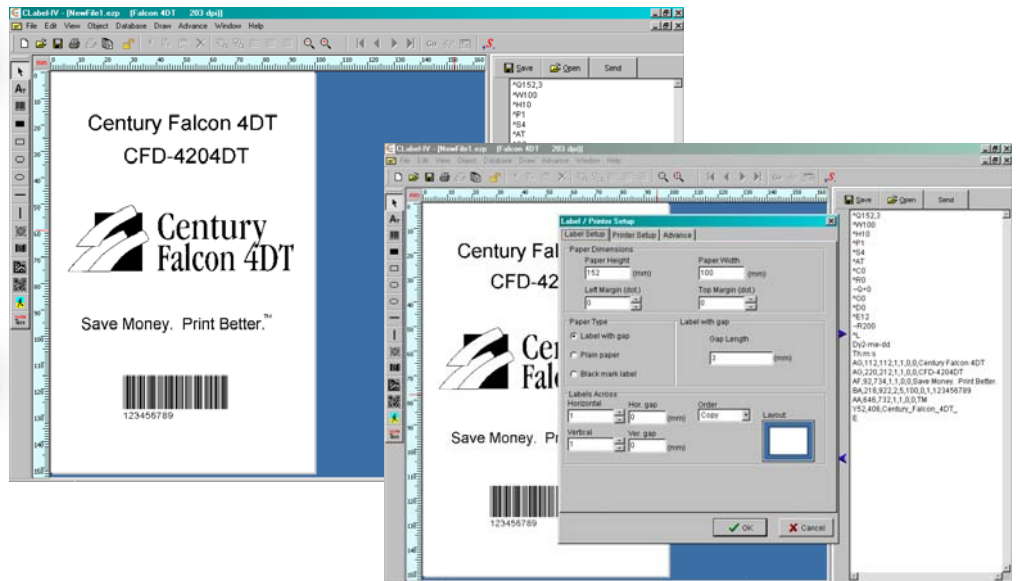
The Falcon 4DT is tough and reliable and can print direct thermal labels and tags up to 4.25" wide.

- Great Connectivity (serial, parallel, USB)
- Low Maintenance
- Small Footprint
- Easy To Load
- Easy To Use



 **Century  
Falcon 4DT**  
Save Money. Print Better.™

**C-Label Professional Grade Label Software is Included**



- Professional Grade
- Full Version Label Software
- Comparable to the pro versions of other leading label software packages

*Professional results that are easy on the budget.*

# Century Falcon 4DT Thermal Printer

## Technical Specifications

<b>Resolution</b>	203dpi
<b>Print Mode</b>	Direct Thermal
<b>CPU</b>	32 Bit
<b>Sensor Type</b>	Adjustable Reflective sensor; Fixed transmissive, center aligned
<b>Sensor Detection</b>	Type: Label gap, black mark sensing Detection: Label length auto sensing and/or program command setting
<b>Print Speed</b>	2" - 4" ips
<b>Print Length</b>	Min. 12.7mm (0.5"); Max. 1727mm (68")
<b>Print Width</b>	Max: 108mm (4.25")
<b>Media</b>	Label Roll: Max. 127mm (5"); Core Diameter: 1", 1.5" Width: 25.0mm (1.0") - 118.0mm (4.65"); Thickness: 0.06 - 0.20mm (0.0025" - 0.008")
<b>Accessories</b>	Real Time Clock Standard, Power cord, USB Cable, Quick Start Guide, CD which includes label editing software C-Label / Manual
<b>Printer Language</b>	EZPL ; Firmware updates downloadable
<b>Software</b>	Application: C-Label IV included; DLL & Driver: Microsoft Windows NT4.0, 2000, XP and Vista
<b>Resident Fonts</b>	11 resident Windows bit-mapped fonts, which are expandable 8 times horizontally, vertically. All fonts in 8 directions rotation. 6, 8, 10, 12, 14, 18, 24, 30, 16x26, OCR A&B Scalable Font in 4 orientations.
<b>Fonts Download</b>	Windows bit-map fonts, True Type fonts & Asian fonts downloadable.
<b>Image Handling</b>	BMP, PCX, Support ICO, WMF, JPG, EMF file through software. Image resize, rotating, mapping & inverse through software.
<b>Barcode</b>	Code 39, Code 93, Code 128 (subset A,B,C), UCC 128, UCC/EAN-128 K-Mart, UCC/EAN-128, UPC A/E (add on 2 & 5), I 2 of 5, I 2 of 5 with shipping bearer bars, EAN 8/13 (add on 2 & 5), Codabar, Post NET, EAN 128, DUN 14, MaxiCode, HIBC, Plessey, random weight, Telepen, FIM, China Postal Code, RPS 128, PDF417, Datamatrix code, (QR code)
<b>Interface</b>	Serial RS-232, USB v2.0
<b>Inter.Trans. Speed</b>	RS232, Baud Rate 4800 - 115200, XON/XOFF, DSR/CTS
<b>Memory</b>	SDRAM: 8MB; Flash: 4MB
<b>Control Panel</b>	One Tri-color LED: Power (Red, Orange, and Green); Function Key: FEED
<b>Power</b>	Auto switching 100/240VAC, 50/60 Hz
<b>Environment</b>	Operation: 41° to 104° F (5° to 40° C) Storage: -4° to 122° F (-20° to 50° C)
<b>Humidity</b>	Operation: 30-85%, non-condensing, free air Storage: 10-90%, non-condensing, free air
<b>Cert. Approval</b>	CE, CUL, FCC Class A, CCC, CB, BSMI, GS
<b>Printer Dimensions</b>	Length: 218mm (8.58"); Height: 166mm (6.53") Width: 168mm (6.61"); Weight: 1.5kg (3.30lbs)
<b>Options</b>	Cutter, Label Peel and Strip, Parallel Port, Internal Ethernet Adapter Card

Specifications listed are for base model printers with standard features only.  
Specifications subject to change without notice.  
All products and brand names are trademarks of their respective companies.  
All rights reserved.  
©2008 by Century Systems, Inc.



Label Guides

