

**Century Falcon 4:
Printing True Type Fonts
With LABELVIEW and LABEL MATRIX**

James E. Will

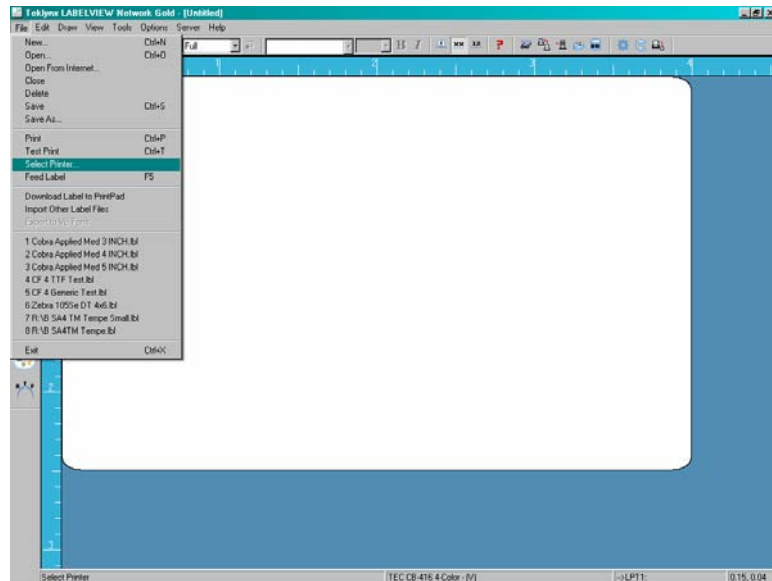
Copyright © 2006 Century Systems, Inc.

Enabling True Type Font Printing For the Century Falcon 4 in LABELVIEW

In order to create and print labels containing True Type fonts on the Century Falcon 4 using LABELVIEW, it is necessary to make a change to the default images setting in the extended driver. Following is the procedure for making the necessary change.

The screen images below derive from LABELVIEW 8.0 running on Windows XP.

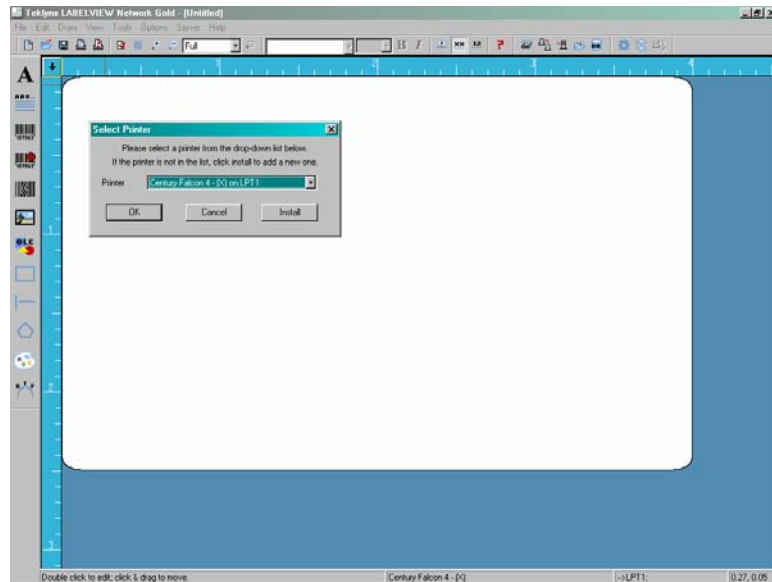
1. Open LABELVIEW.
2. Go to the FILE menu, and click on Select Printer.



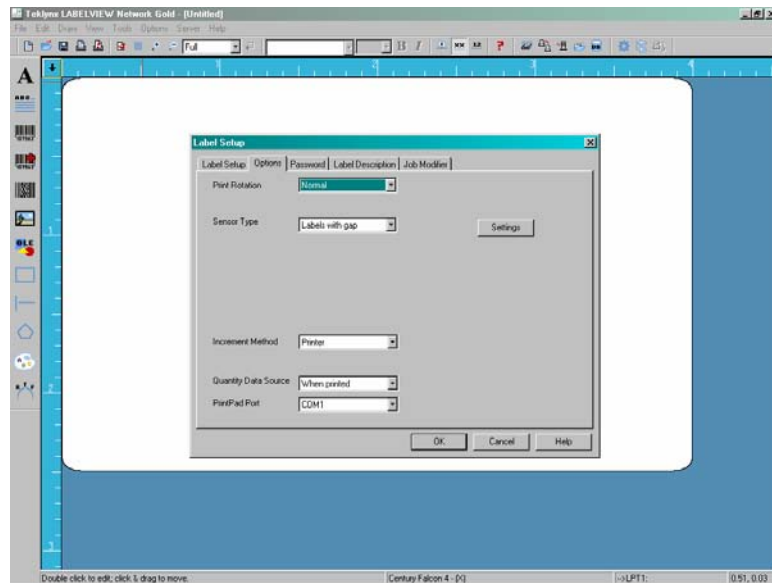
3. In the Select Printer dialog box, make sure that the driver name reads 'Century Falcon 4 - (X) on LPT1' and click OK. (See next page.)

NOTE: If you do not see this driver name, please refer to the Appendix to this article, "Installing the Century Falcon 4 Extended Driver in LABELVIEW."

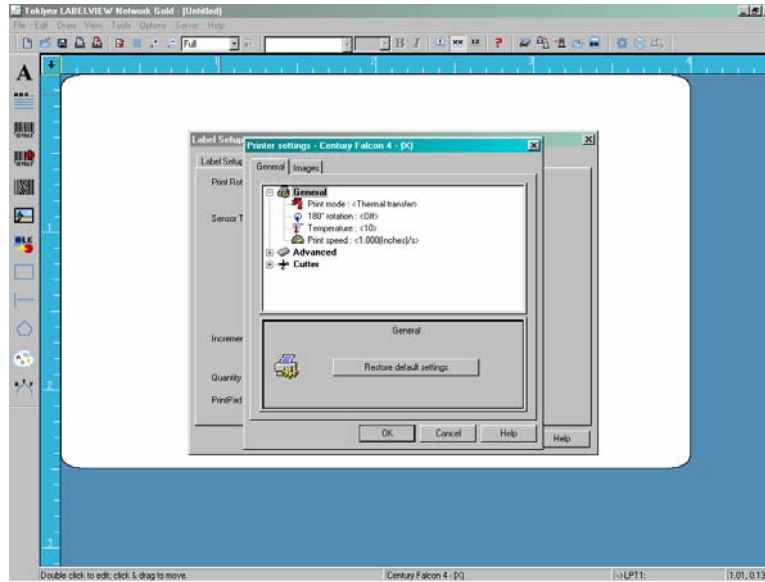
The 'Select Printer' screen should look like this:



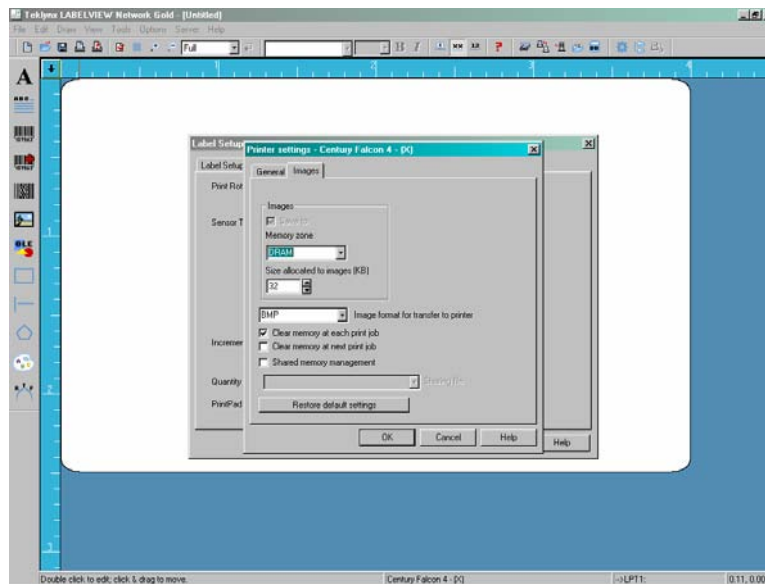
4. Go to the EDIT menu and click on Label Setup.
5. In the Label Setup dialog box, click on the Options tab.



- Click on the Settings button, located on the right side of the Label Setup window. A new Window will open up titled 'Printer settings – Century Falcon 4 – (X)'.



- Next, click on the Images tab.



- Place a check mark in the box that reads 'Clear memory at each print job'. Then click OK. You will need to click OK again in the Label Setup window. This will return you to the main LABELVIEW design screen.

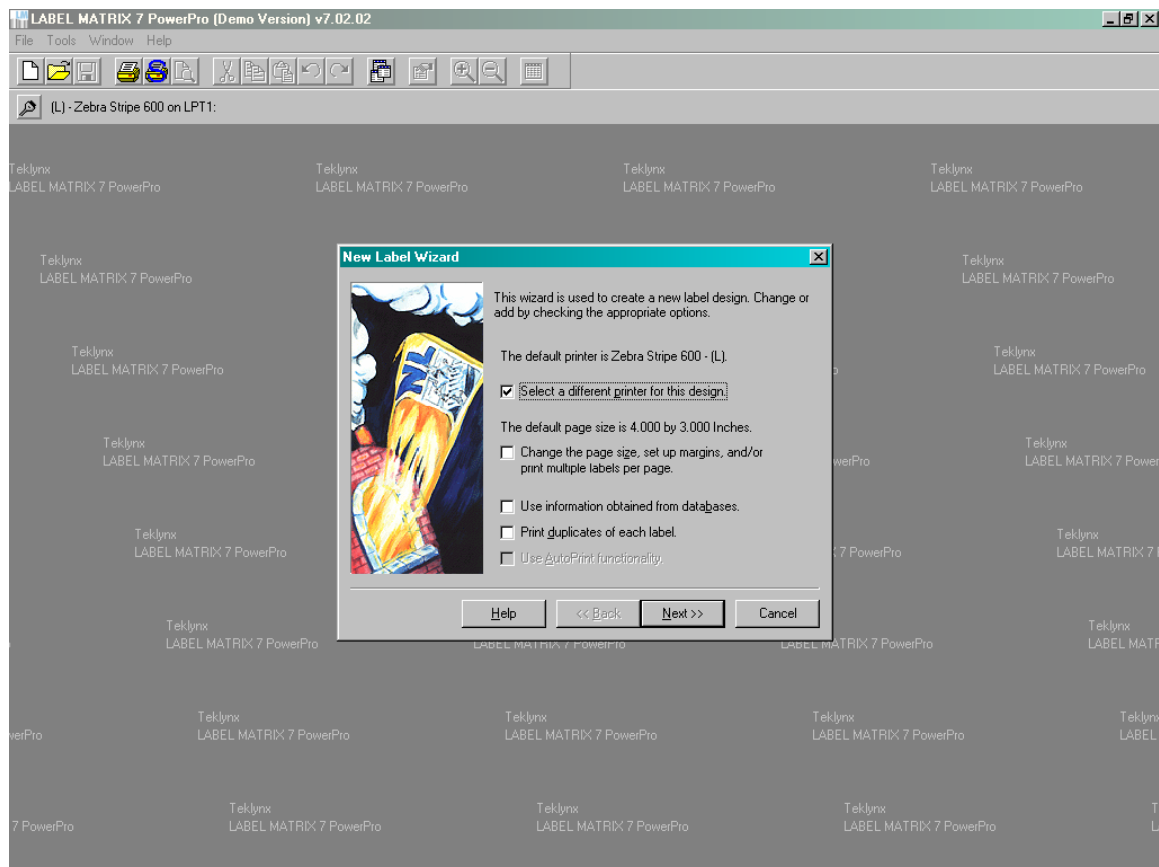
NOTE: Occasionally it is necessary to check the box that reads 'Clear memory at next print job' also.

Enabling True Type Font Printing For the Century Falcon 4 in LABEL MATRIX

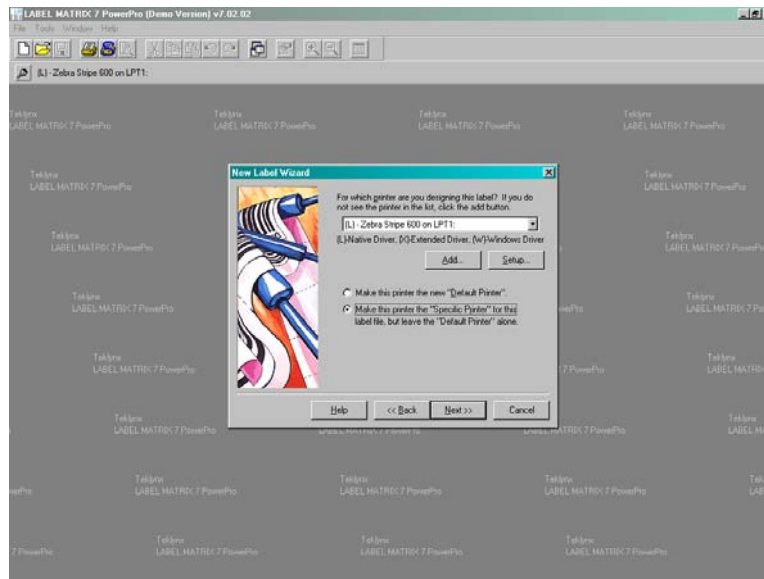
Designing and printing labels with True Type fonts in LABEL MATRIX software for the Century Falcon 4 involves a driver setup change just as in LABELVIEW. Since design generally begins with the LABEL MATRIX wizard, the procedure below follows the steps needed to install the printer and to modify the default driver settings.

The screen images below derive from LABEL MATRIX 7.02 running on Windows XP.

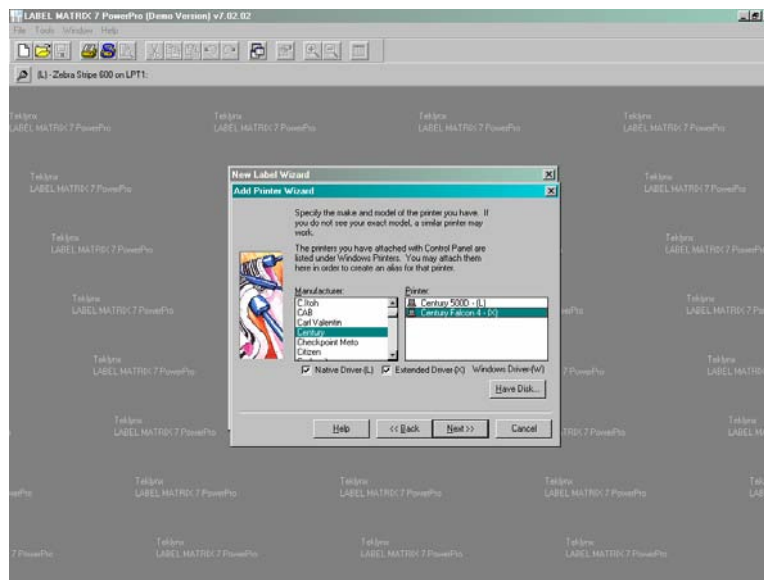
1. Open LABEL MATRIX software.
2. In the LABEL MATRIX start-up window, select 'Create a new label' and click OK.
NOTE: If Label Matrix is already open, go instead to the FILE menu, and click 'New'.
3. When the New Label wizard dialog box appears on the screen, mark the check box that reads 'Select a different printer for this design'. [NOTE: You can leave the check box blank if the Falcon is your default printer.] Be sure to mark any other relevant check boxes on the lower portion of the New Label wizard. Then click 'NEXT'.



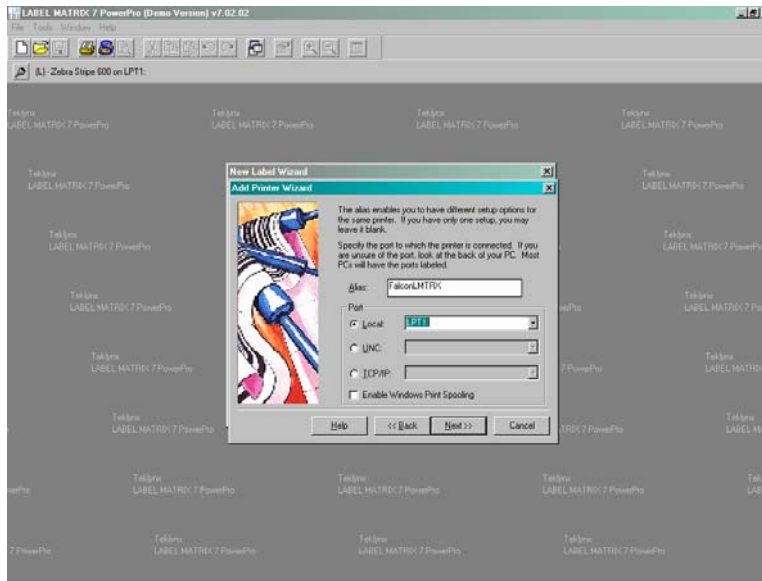
4. In the box that follows, select 'Make this printer the "Specific Printer"' for this label file, but leave the "Default Printer" alone'. Then click the ADD button to begin the installation of the Falcon extended driver.



5. The Add Printer wizard will start. The first screen is a general information box. Click NEXT. The left side of the second screen contains a list of printer manufacturers. Locate and highlight 'Century'. On the right side of the same screen, highlight 'Century Falcon 4 - (X)', then click NEXT.

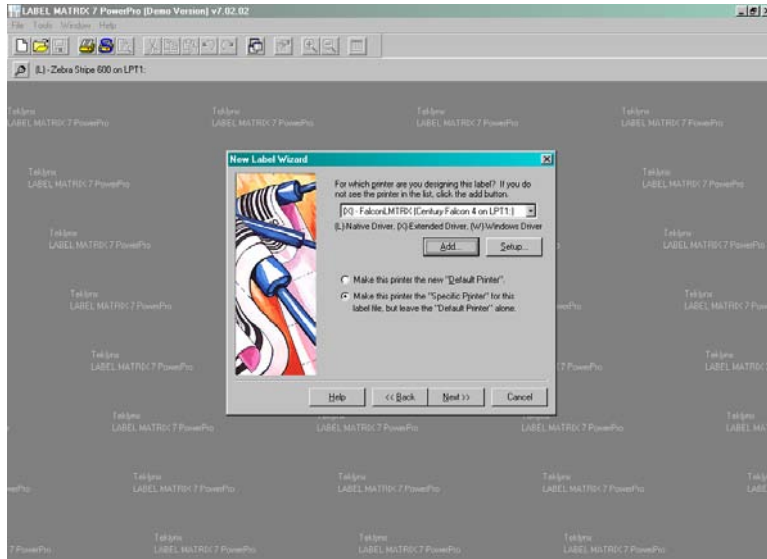


- The third screen of the Add Printer wizard allows you to specify an alias for the new printer in the event that you want to utilize different setup options for it. Otherwise, define the port as 'local' and choose the type of connection you will be using. (In the example below, a parallel connection on LPT1 has been used.) Once the port selection is made, click NEXT.

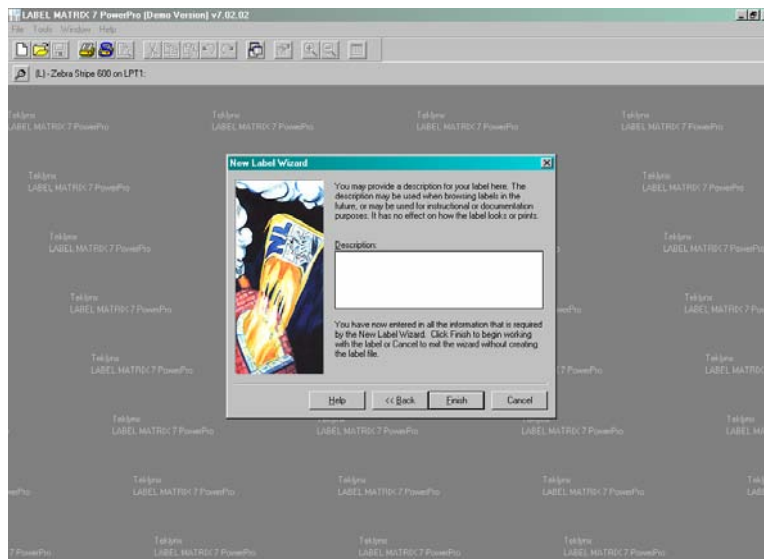


- The final screen of the Add Printer Wizard allows you to make changes to the basic driver setup. Assuming the setup is satisfactory, click FINISH. At this point, the new printer driver will be installed, and you will automatically be returned to the New Label wizard. Make sure that the new driver name appears in the window as follows: '(X) – ALIAS NAME (Century Falcon 4 on LPT1)'.

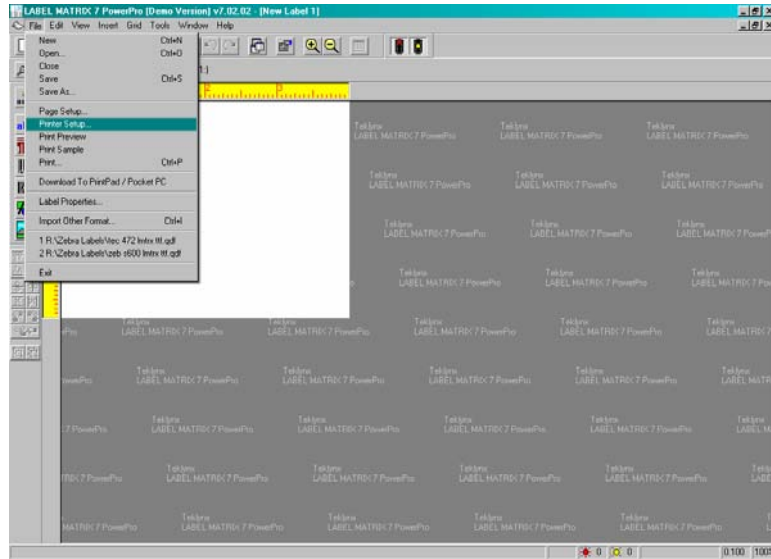
NOTE: The Alias Name is optional. (See step 6 above.)



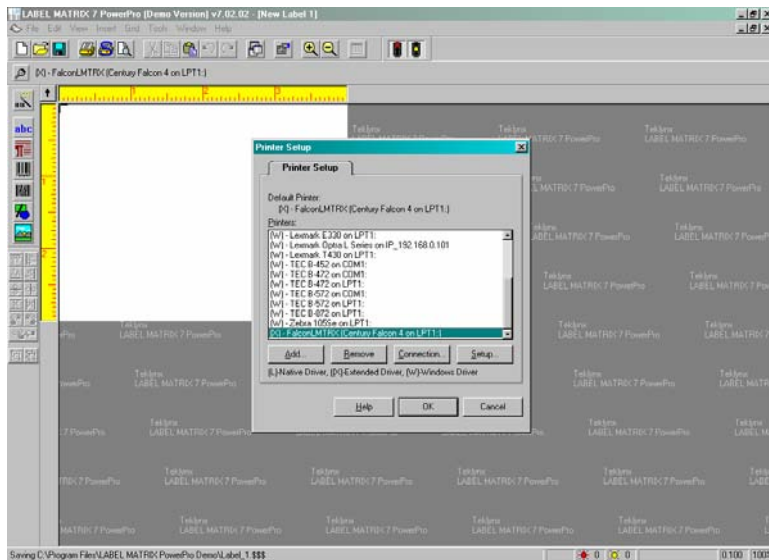
8. Click NEXT.
9. The New Label wizard includes a final screen that permits you to create a description of your label design, if so desired. Click FINISH.



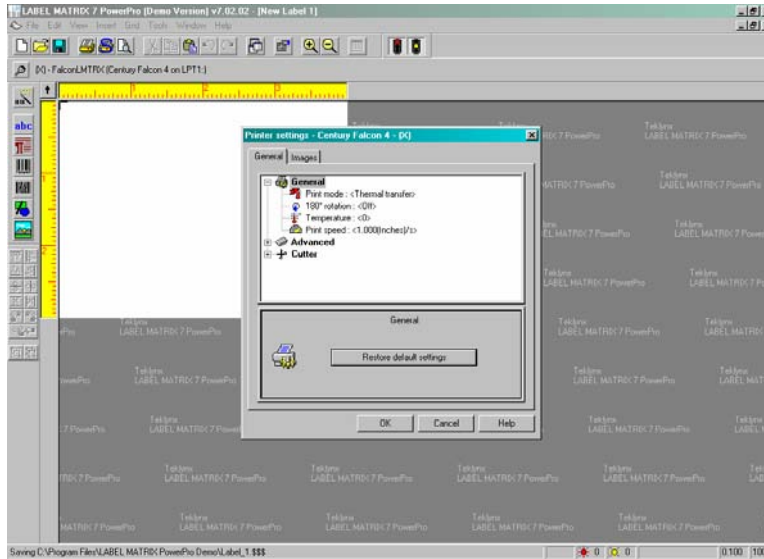
10. At this point a blank label design will appear on the LABEL MATRIX desktop, corresponding to the initial setup specified in the New Label wizard. To enable the printing of True Type fonts, continue with the next steps.
11. Go to the FILE menu and click on Printer Setup.



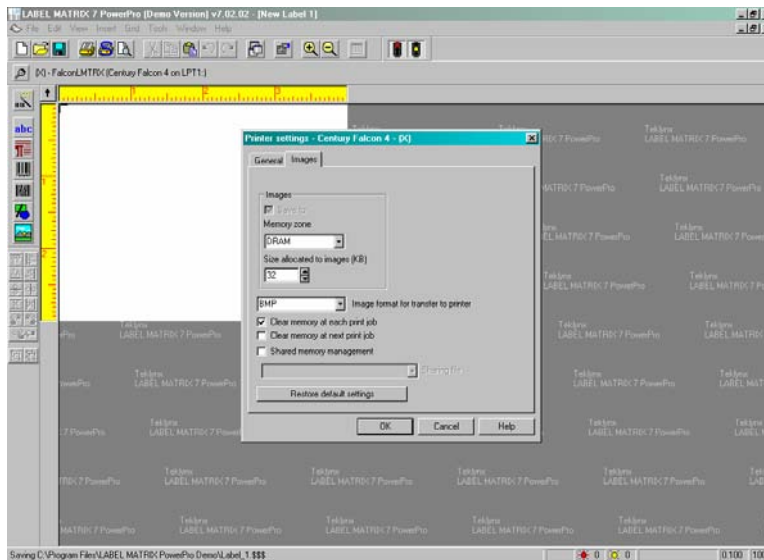
12. In the Printer Setup window, highlight the Century Falcon LABEL MATRIX extended driver.



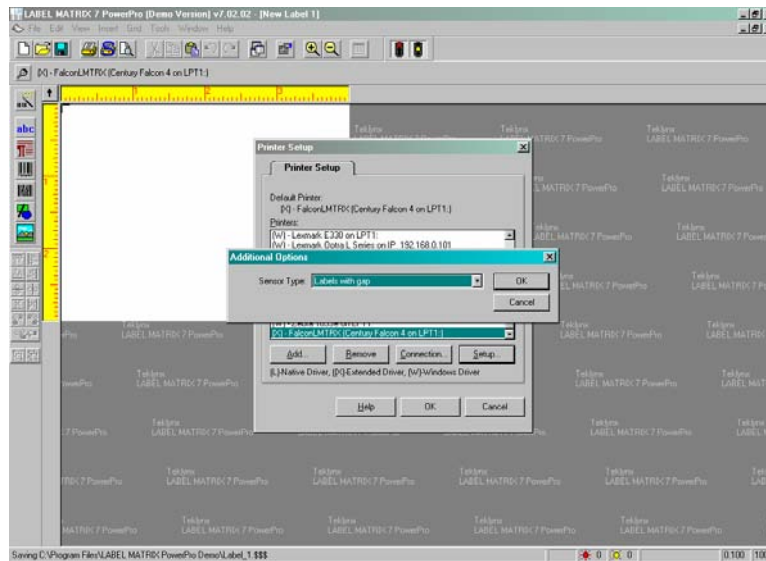
13. Click on the Setup button. This will bring you to the Printer Settings screen below, which should have the title 'Printer settings – Century Falcon 4 – (X)'.



- Click on the Images tab and make sure that a checkmark is in the box that reads 'Clear memory at each print job'.
NOTE: Occasionally it is necessary to check the box that reads 'Clear memory at next print job' also.



- Click OK to exit the Printer Settings window. You will then see a small window pop up in order to specify additional options, in this case to indicate the sensor type that will be used on the printer. Choose the appropriate sensor from the dropdown list and click OK.



16. In the Printer Setup window, click OK.

APPENDIX. Installing the Century Falcon 4 Extended Driver in LABELVIEW

DEFAULT PARALLEL INSTALLATION

1. Open LABELVIEW.
2. Go to the FILE menu and click on Select Printer.
3. In the Select Printer dialog box, click the Install button.
4. The Install Printer Drivers window will open. The top section of this window lists those printer drivers that have already been installed on your computer.

IMPORTANT: Make sure that the Extended Drivers check box is checked.

In the lower left corner of the window, locate the manufacturer name for your printer (Century) and highlight it. Then, on the right side of the box, highlight the Falcon 4 – (X) driver, and click Install.

5. After a few seconds, your newly installed driver will appear in the box at the top of the Install Printer Drivers window with the name ‘Century Falcon 4 – (X) on LPT1’.
6. Click CLOSE to exit the Install Printer Drivers window. This will return you to the Select Printer box.
7. Make sure that the Select Printer box reads ‘Century Falcon 4 – (X) on LPT1’ and then click OK.

OTHER TYPES OF PORT CONNECTIONS

To use the Falcon 4 extended driver on either a serial or USB port, use the following instructions:

1. Perform steps 1-5 as outlined above.
2. Click the CONNECT button at the upper right hand corner of the Install Printer Drivers window.
3. In the Ports Available box, highlight the port name that you wish to use.
 - a. If you are connecting to a COM port, click on the Setting button and verify your serial port parameters. Click OK once you have the desired settings. Then click OK to exit the Port Available window.
 - b. If you are connecting to a USB port, click OK.
4. Click CLOSE to exit the Install Printer Drivers window. This will return you to the Select Printer box.
5. Make sure that the Select Printer box reads 'Century Falcon 4 – (X) on *****' and then click OK. [In place of the asterisks you will see the actual port name that you have chosen to use.]

SUPPLEMENTARY NOTE REGARDING THE USE OF TRUE TYPE FONTS

For most setup applications, the LABELVIEW and LABEL MATRIX driver setup changes described above will permit the printing of True Type fonts on the Century Falcon 4. Should this procedure not work, then one change will need to be made on the printer side in order to print normally. The steps listed below should solve the problem.

1. Begin with your Century Falcon 4 printer turned off. Connect the parallel cable (preferred) from your computer to the parallel port on the printer. Turn on the Falcon and make sure that it is in READY mode.
2. Open Q Label IV software.*
3. Go to the FILE menu and either click on 'New' to create a new label or 'Open' to open an existing label design. [NOTE: If you choose 'New' the Label Setup window automatically opens. Click OK to exit the window.
4. On the main Q Label menu, locate the Advance button and click it. Go to 'Clear memory' and follow the submenu arrow to 'Printer External flash memory'.
5. When you click on this choice, Q Label will prompt you whether you wish to clear the external flash memory or not. Click on 'Yes'.

* Q Label is the label design software program that comes free with all Falcon printers.